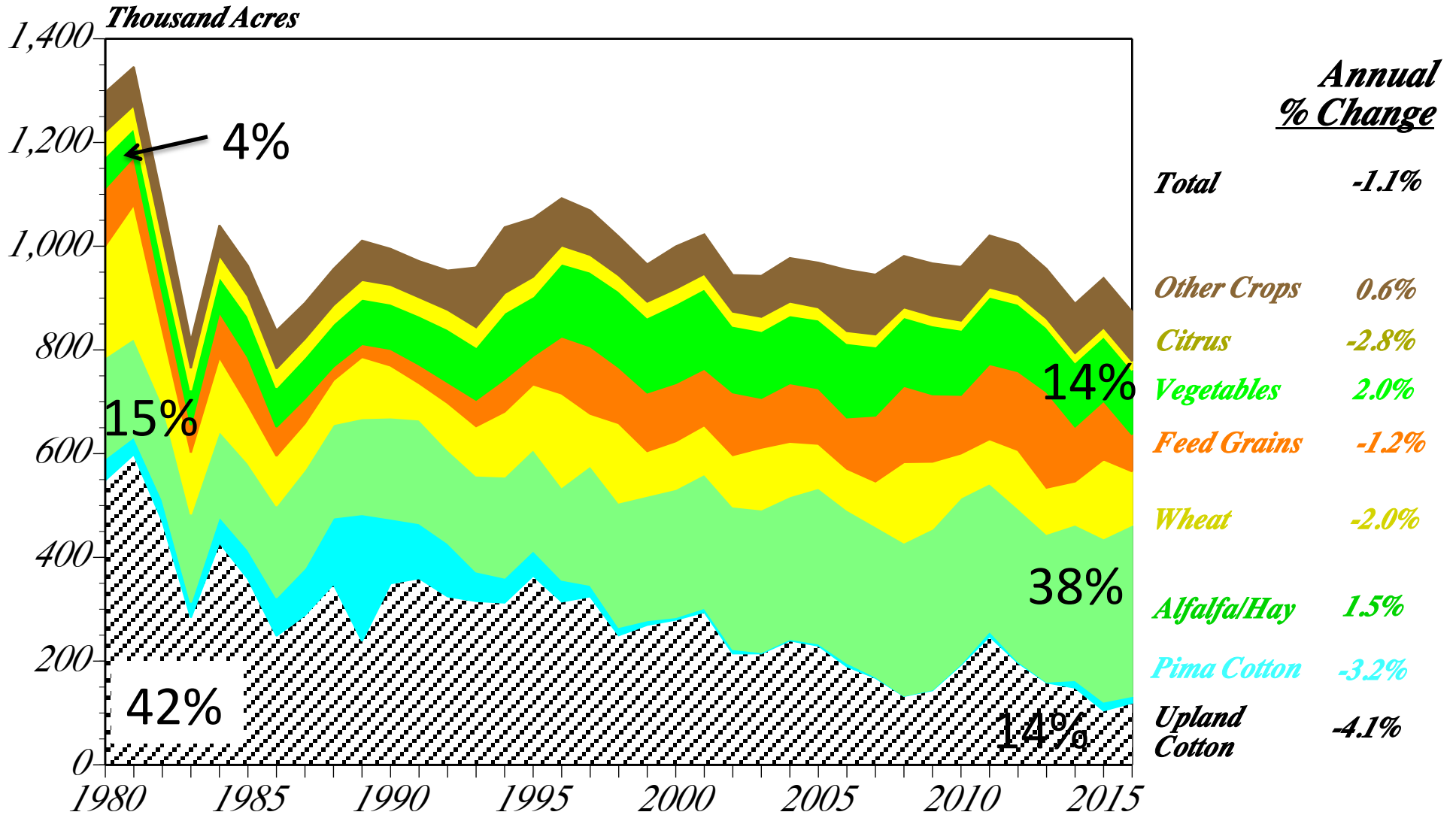
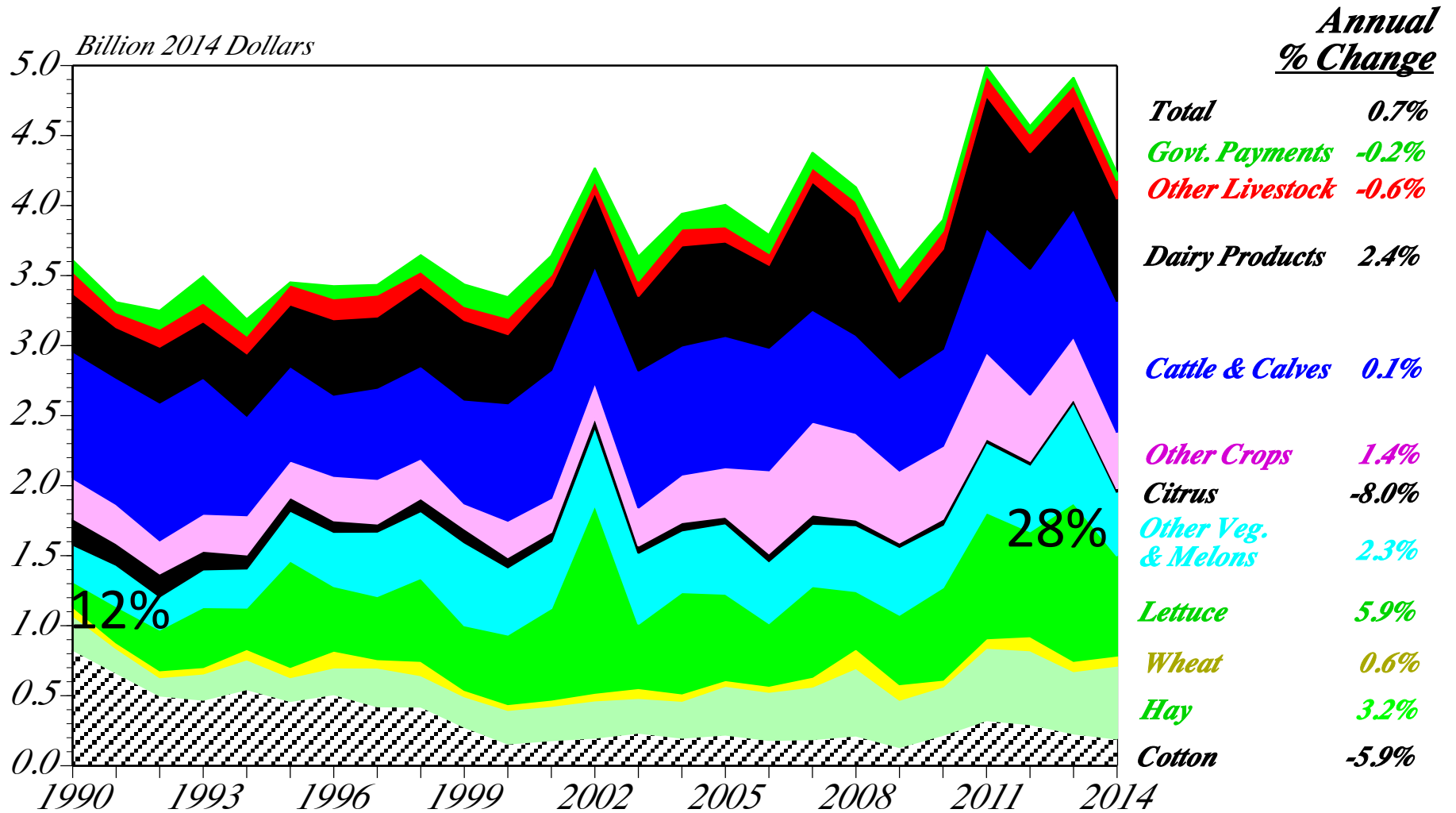


# AZ Crop Acres, 1980-2016



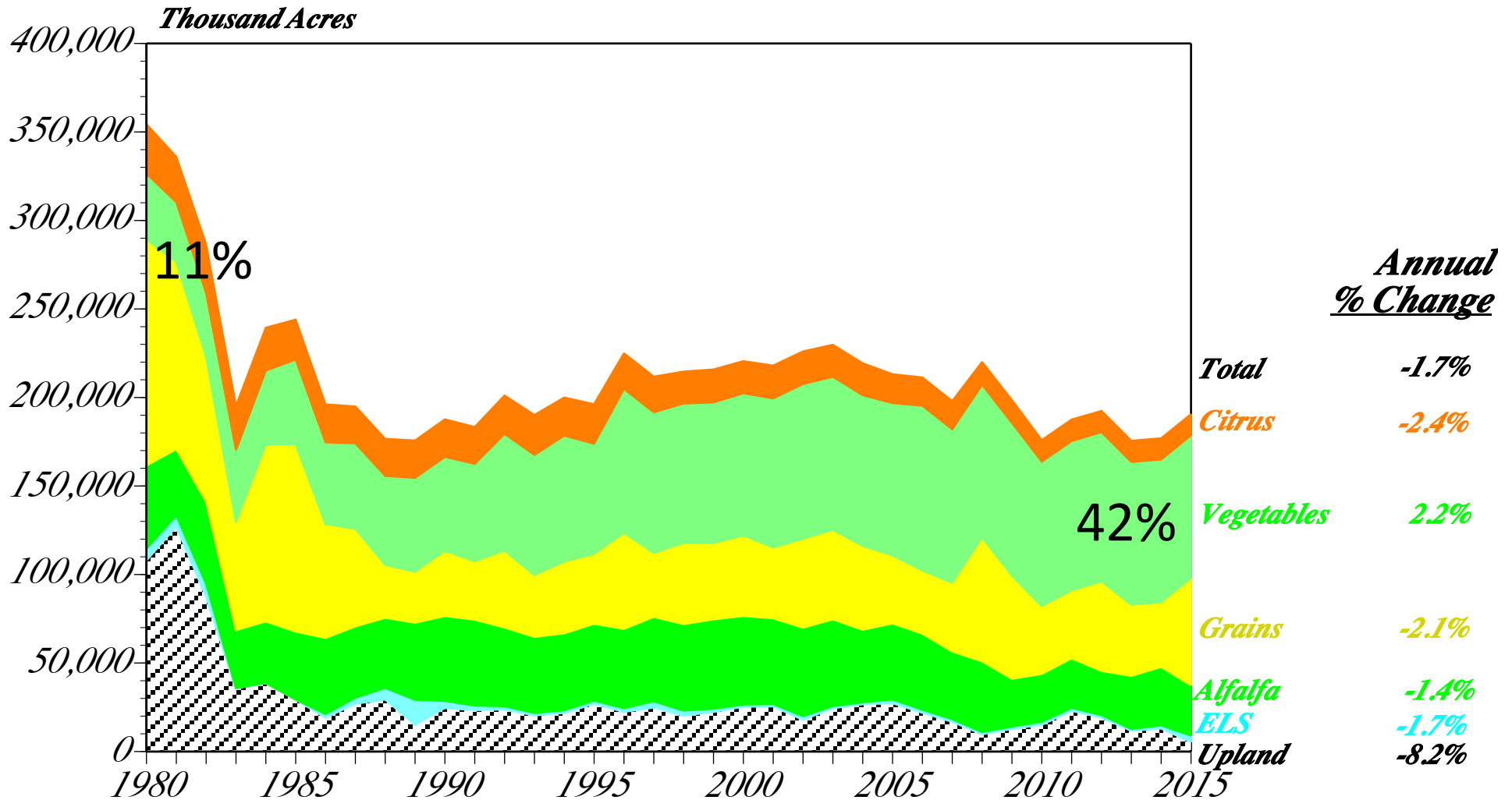
Source: Arizona Agricultural Statistics, USDA/NASS

# AZ Cash Receipts, 1990-2014



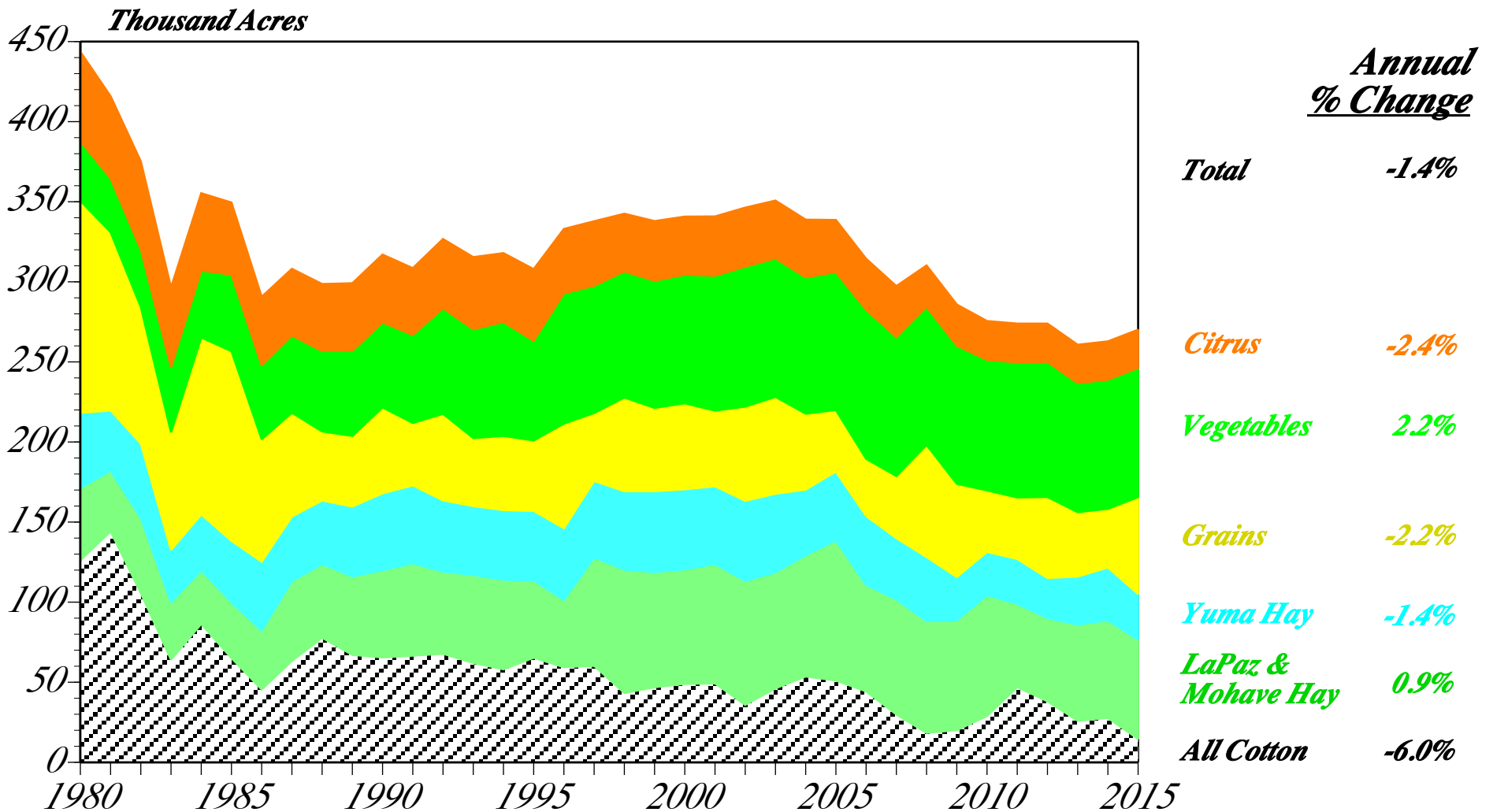
Source: Arizona Agricultural Statistics, [nass.usda.gov](http://nass.usda.gov), various years, not finalized for 2013 & 2014  
 Revenues are deflated by the Consumer Price Index for all goods, 1982-84=100

# Yuma County Crop Acres, 1980-2015



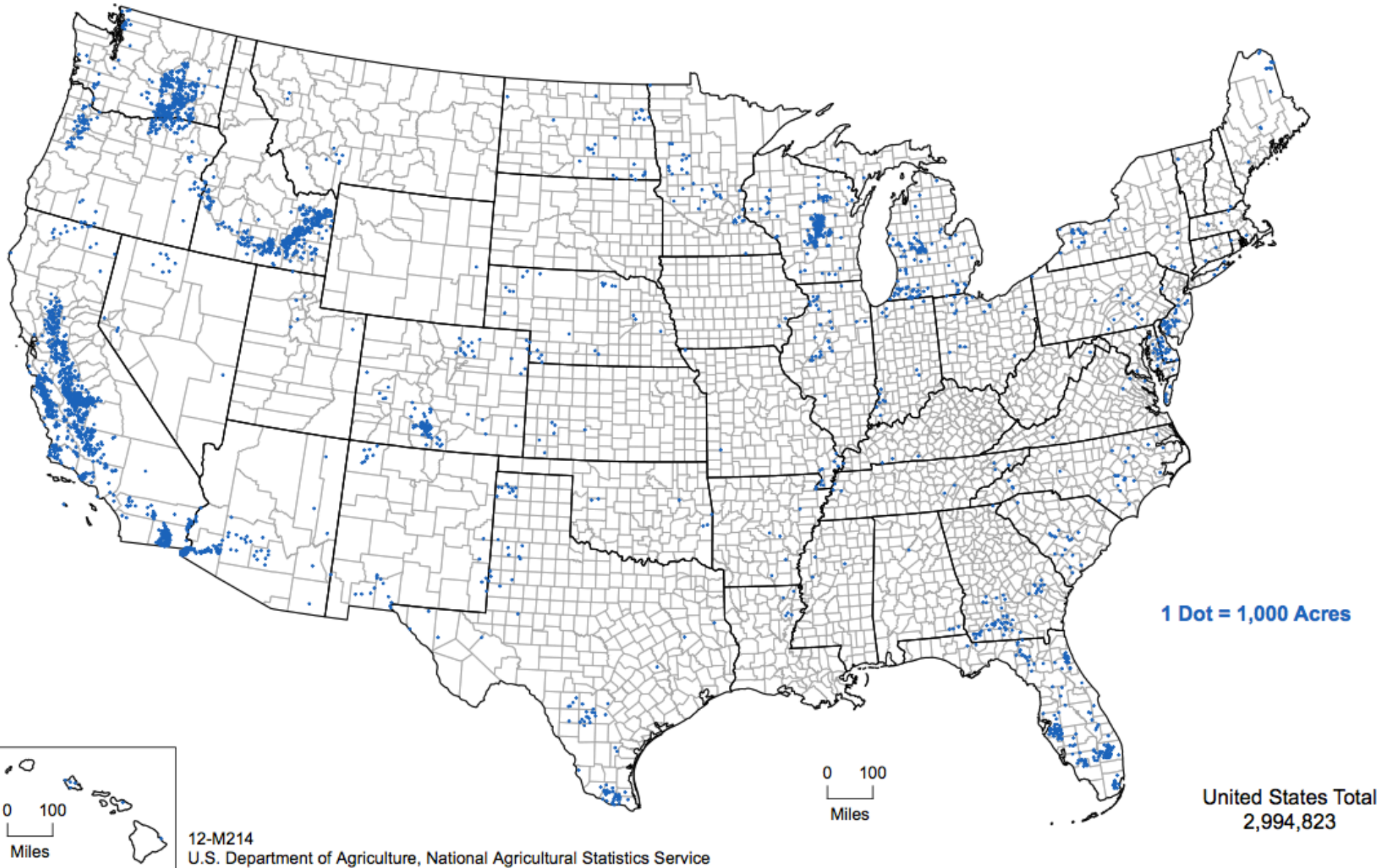
Source: Arizona Agricultural Statistics.

# LaPaz, Mohave, & Yuma Counties Crop Acreage, 1980-2015



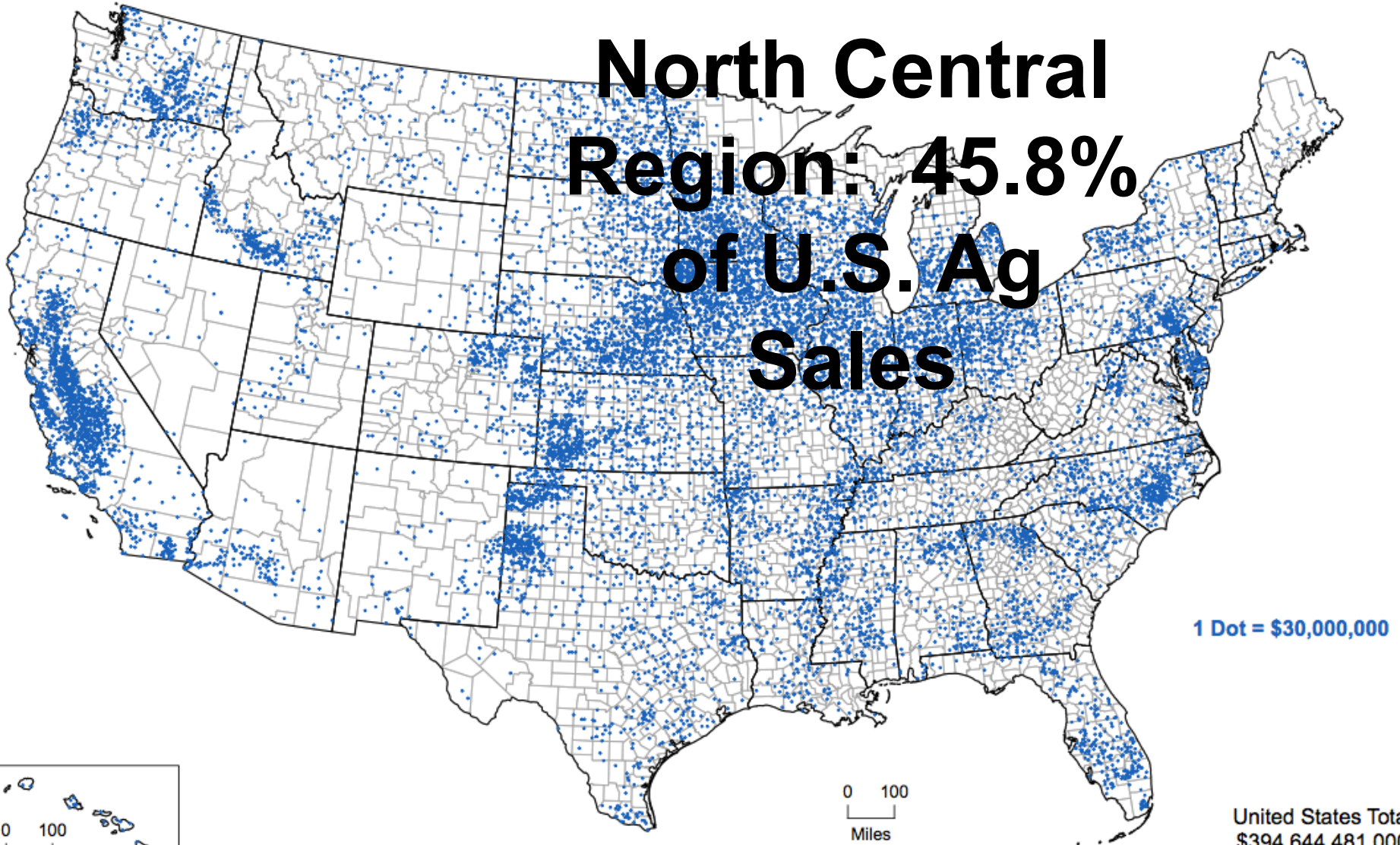
Source: Arizona Agricultural Statistics.

# Irrigated Vegetables, 2012

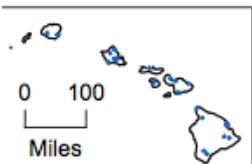


# Ag Products Sales, 2012

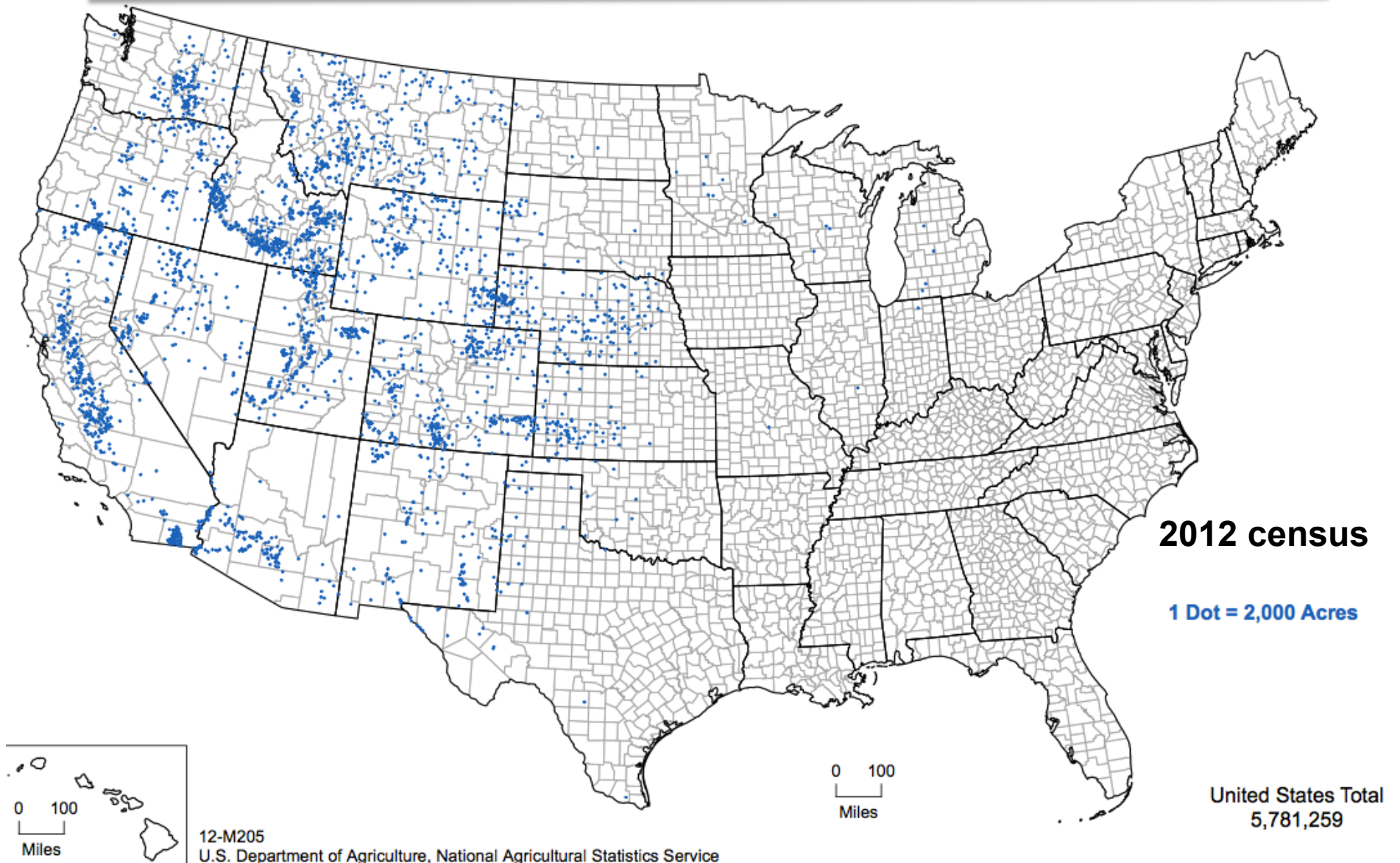
**North Central  
Region: 45.8%  
of U.S. Ag  
Sales**



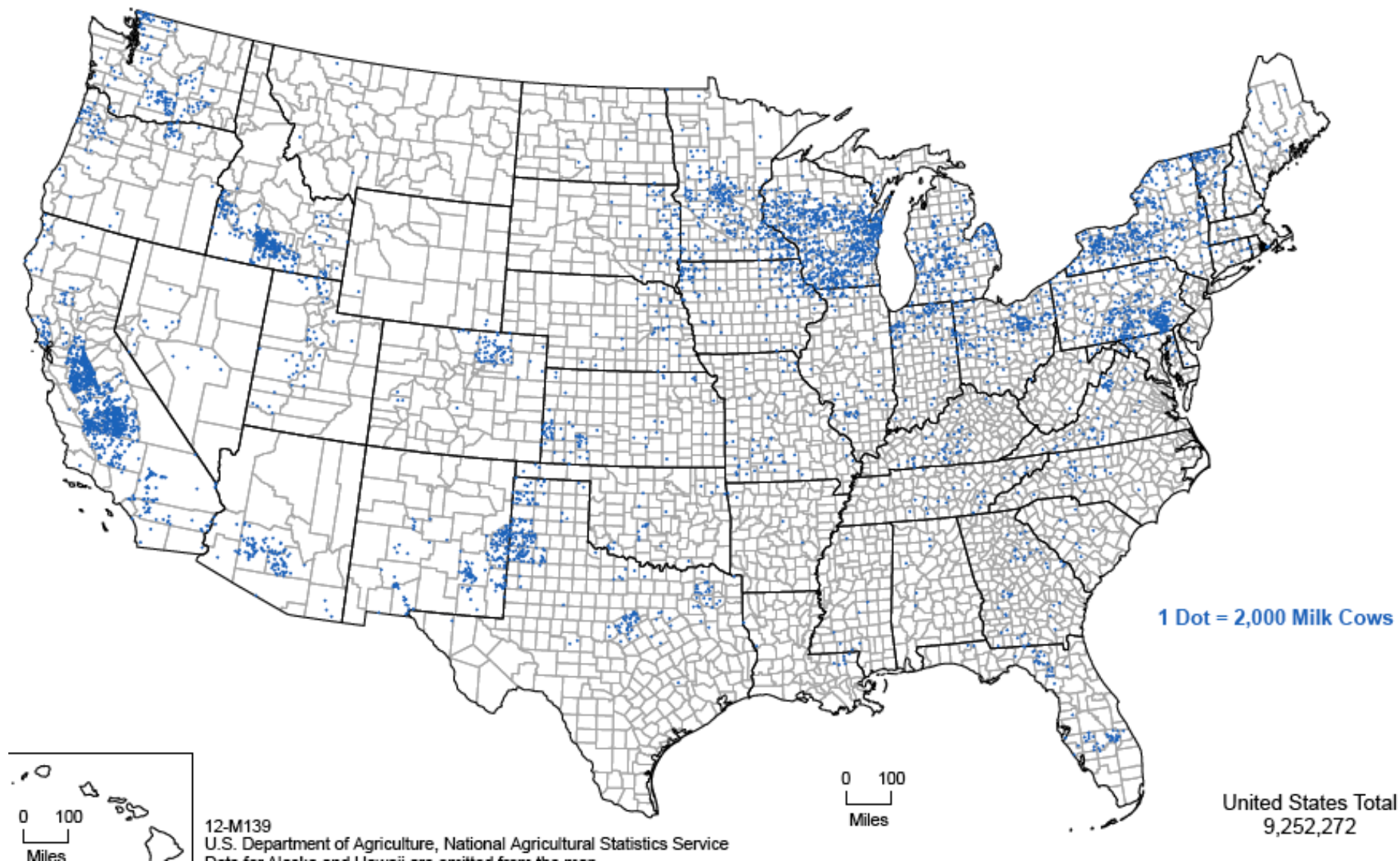
United States Total  
\$394,644,481,000



# Irrigated Alfalfa Acreage

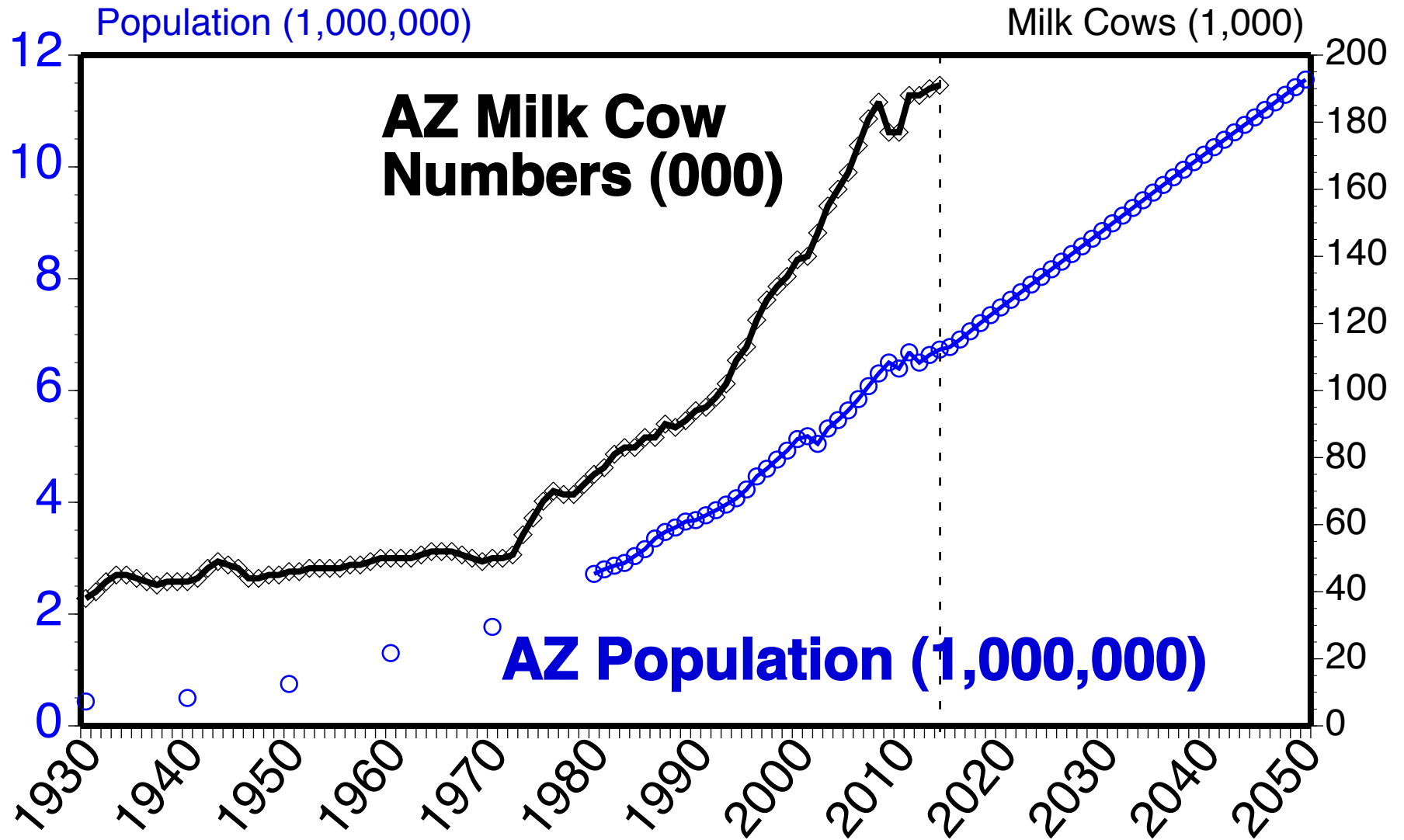


# Milk Cows, 2012 census

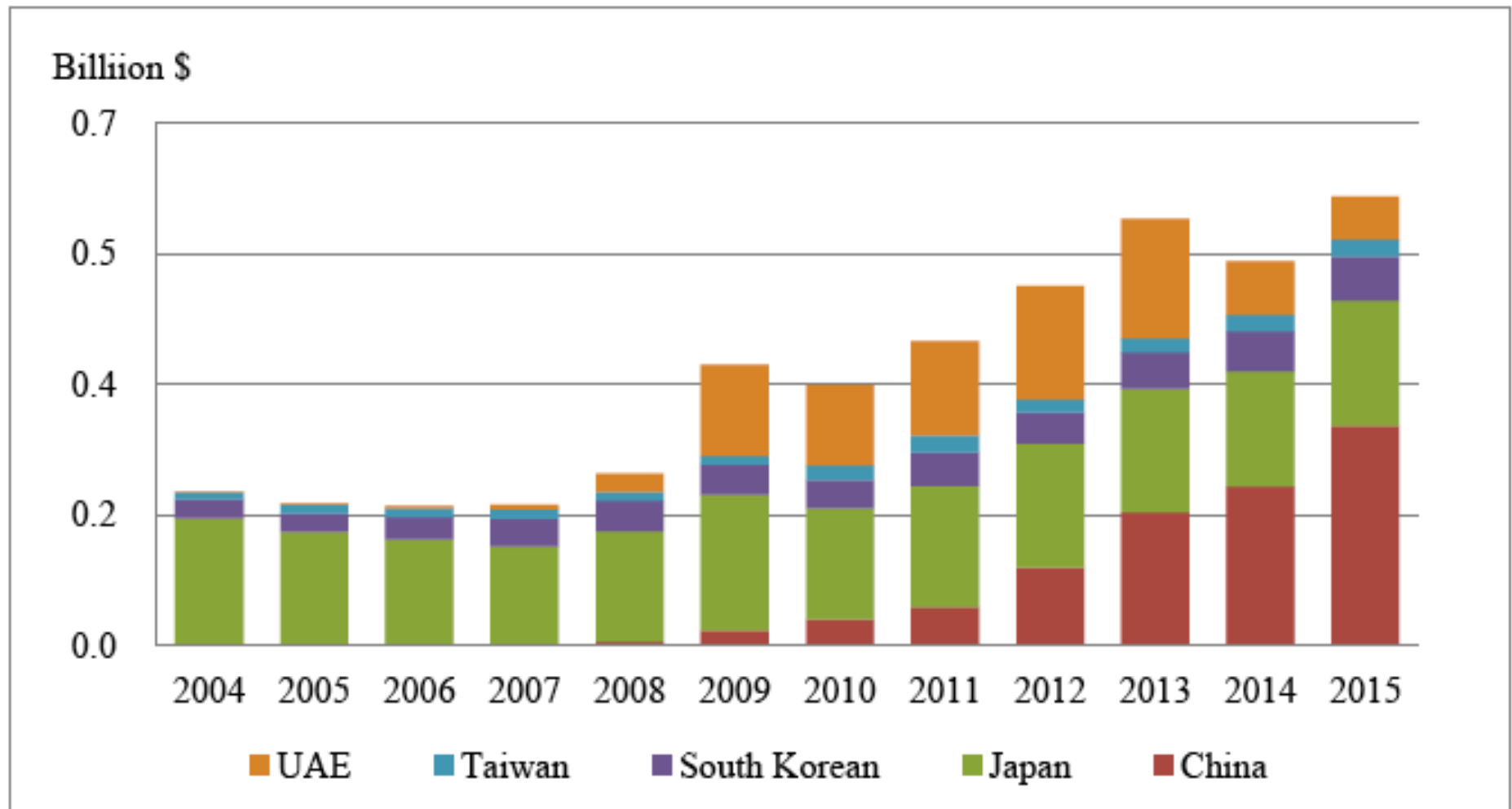




# AZ Population & Dairies



# Alfalfa Export Value by Country



Data source: USDA-FAS, 2015's \$