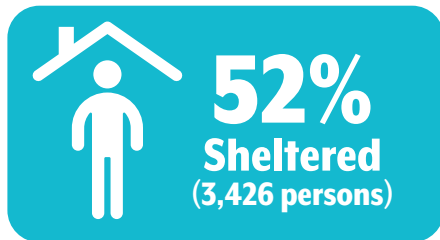


2019 Point-in-Time (PIT) Count

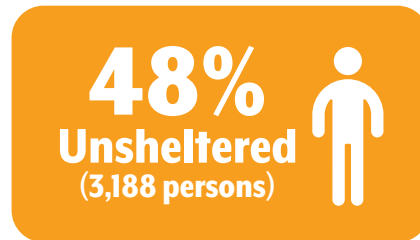
Maricopa Regional Continuum of Care

6,614

people experiencing homelessness
in Maricopa County on the night of January 21, 2019

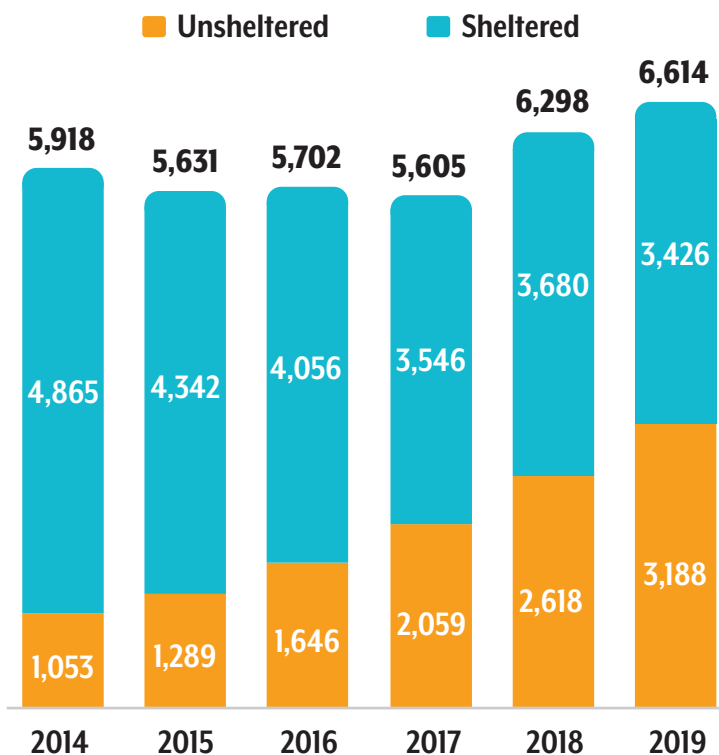


Includes people who stayed in Emergency Shelter, Transitional Housing, or Safe Haven programs.



Includes people who slept on the streets or another place not meant for human habitation.

Total PIT Count, 2014-2019



The unsheltered count has been steadily increasing.

New Survey Questions:

Where were you this time last year?



88% Maricopa County
7% Another State
5% Another County in AZ



182
Unsheltered Pets

Source: Results from Unsheltered PIT Count interview surveys

Growth Rate from 2018-2019

Total PIT Count

5%

Unsheltered PIT Count

22%

The unsheltered count increased at a **higher rate** than the overall PIT count.

What is the PIT Count? The Point-in-Time (PIT) Homeless Count is an annual street and shelter count to determine the number of people experiencing homelessness in Maricopa County during a given point in time. This count is part of a national effort to identify the extent of homelessness throughout the country. The count includes a brief survey to identify the needs of those experiencing homelessness. *For more information, including the extrapolation methodology, visit <http://azmag.gov/Programs/Homelessness/Point-In-Time-Homeless-Count>.*



Maricopa Association of Governments (MAG)
(602) 254-6300 www.azmag.gov